


- NOTES:**
1. DISCONNECT THE AIRCRAFT BATTERY AND REMOVE THE INSTRUMENT PANEL OVERLAYS AS NECESSARY.
 2. THE USE OF BOM ITEM 4 AND 5 IS OPTIONAL AND APPLICABLE ONLY FOR USE WITH THE FLAT PACK CONTROL HEAD. TRIM ITEM 4 TO FIT, PRIMER AND PAINT AS DESIRED. ADD MOUNTING HOLES TO ITEM 5 TO FACILITATE ATTACHMENT TO THE AVIONICS STACK MOUNTING RAILS.
 3. A/P CONTROL HEAD LOCATION SHOWN IS FOR REFERNCE AND CONTROL HEAD SHOULD BE MOUNTED PER THE REQUIREMENTS STATED IN TRUTRAK DOCUMENT NO. 166 "VIZION PMA AUTOPILOT INSTALLATION GUIDE".
 4. LOCATE CONTROLLER TO CLEAR EXISTING AIR AND ELECTRICAL LINES BEHIND THE INSTRUMENT PANEL. ENSURE FULL RANGE OF MOTION OF THE CONTROL YOKES.
 5. FOR AIRCRAFT WITH RUBBER HOSES AND ALUMINUM TUBE FITTINGS, USE EXISTING TYPE HOSES AND FITTINGS FOR PITOT AND STATIC CONNECTIONS.
 6. ENSURE AUTOPILOT CONTROLLER LIMITATIONS PLACARD, BOM ITEM 3 IS INSTALLED NEAR A/P CONTROL.
 7. LABEL A/P MASTER SWITCH.
 8. THE SONALERT INSTALLATION IS OPTIONAL. SUGGESTED MOUNTING LOCATION SHOWN.

REV	DESCRIPTION	DRAWN	CHECKED	APPROVED
IR	INITIAL RELEASE	-	-	-
A	UPDATED BOM ITEM 6 P/N AND ADDED BOM ITEM 13.	D SAM 07/15/2021	L WILDING 07/15/2021	D RANKIN 07/15/2021
B	UPDATED PER BENDIXKING REDLINES	M BAIG 02/15/2022		

ITEM	QTY	PART NUMBER	DESCRIPTION	VENDOR	NOTES
13	REF	MTL106D	A/P MASTER SWITCH	-	
12	8	259N04	SEAL INSERT	-	
11	8	261N04	FLARENUT	-	
10	2	264N04	TEE FITTING	-	5 ; INSTALLER SUPLIED
9	2	Z68N04	ADAPTER FITTING	-	
8	A/R	44NSR	TUBING	-	
7	REF	SC628	SONALERT	-	OPTIONAL
6	4	MS315190-236	6-32x3/8" SCREWS	-	ALT P/N'S: MS51957-28, MS51861-24 OR EQUIVALENT
5	2	1420-226	FP AS MOUNTING BLOCK	BENDIXKING	OPTIONAL
4	1	1450-119	FP AS ADAPTER PLATE	BENDIXKING	OPTIONAL
3	1	PA-201130-327	MOONEY M20 LIMITATIONS PLACARD	BENDIXKING	
2	REF	8100-113	A/P LVL SWITCH	BENDIXKING	
1	REF	8000-175	A/P FLAT PACK CONTROL HEAD	BENDIXKING	ALT P/N'S: 8000-174, 8000-176
BILL OF MATERIALS					

 XX=ITEM NUMBER, YY=QTY, AR=AS REQUIRED.

PEREGRINE

7385 S PEORIA ST
UNIT C4
ENGLEWOOD, CO 80112

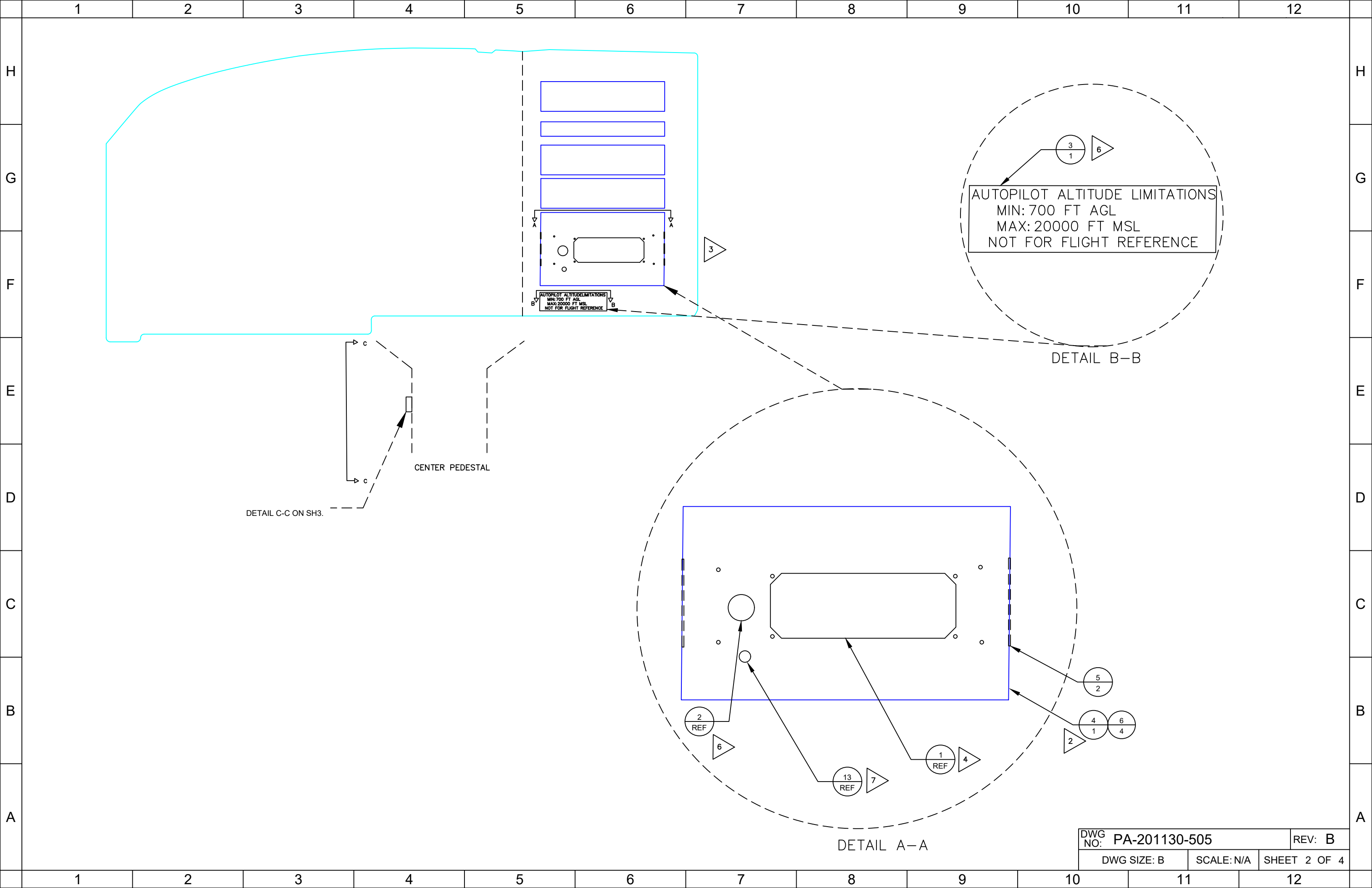
ALL INFORMATION CONTAINED HERE IN IS PROPERTY OF PEREGRINE AND SHALL NOT BE DUPLICATED WITHOUT THE EXPRESS WRITTEN CONSENT OF PEREGRINE

**TITLE: FLIGHT DECK CONTROLS
MOONEY AEROCRUZE 100**

DWG NO: **PA-201130-505** REV: **B**

DWG SIZE: B SCALE: N/A SHEET 1 OF 4

WEIGHT: N/A NEXT ASSEMBLY: N/A





7
REF 8

CENTER PEDESTAL DETAIL C-C

CHECK LIST

T A K E O F F	CONTROLS	RUN-UP	DOOR
	FUEL	PROP	WINDOW
	INSTRUMENTS	WING FLAPS	AUT AIR
	TRIM	SEAT LATCH	PARK BRAKE
G O I N	CONDUCT RUBBER AND SEWATER TRIM CHECK PRIOR TO FLIGHT. SEE PILOT'S OPERATING HANDBOOK		MIXTURE
	BELT/HARNES	GEN	PROP
	FUEL	WING FLAPS	PARK BRAKE

