

KMD 250 Quick Reference

006-18282-0000

Rev. 2 August 2007



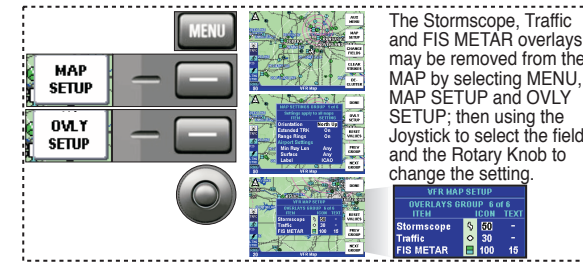
VFR Map



IFR Map



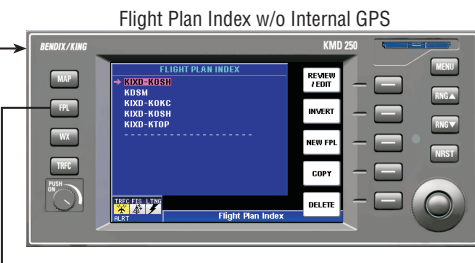
Relative Terrain Map



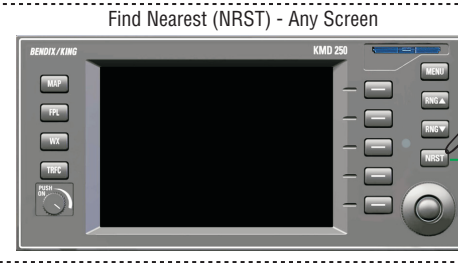
The Stormscope, Traffic and FIS METAR overlays may be removed from the MAP by selecting MENU, MAP SETUP and OVLY SETUP; then using the Joystick to select the field, and the Rotary Knob to change the setting.



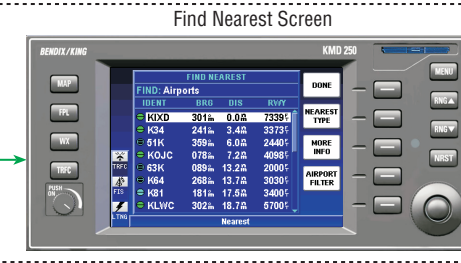
Flight Plan Map w/o Internal GPS



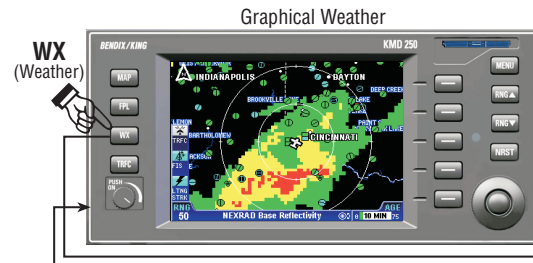
Flight Plan Index w/o Internal GPS



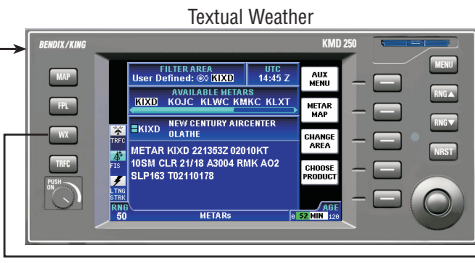
Find Nearest (NRST) - Any Screen



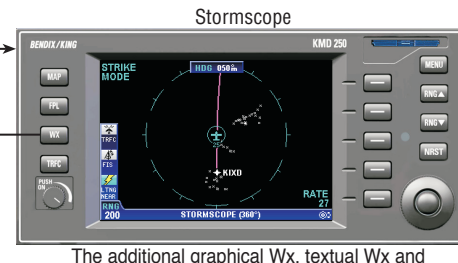
Find Nearest Screen



Graphical Weather



Textual Weather



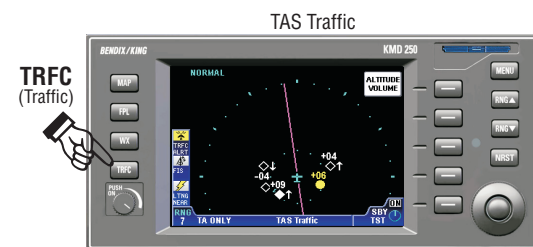
Stormscope

The additional graphical Wx, textual Wx and Stormscope pages are shown on the back side.

Honeywell Aerospace
Honeywell International Inc.
One Technology Center
23500 West 105th Street
Olathe, KS 66061
FAX: (913) 791-1302
Telephone: (913) 712-0400

Copyright © 2003, 2004, 2007 Honeywell International Inc. All rights reserved.

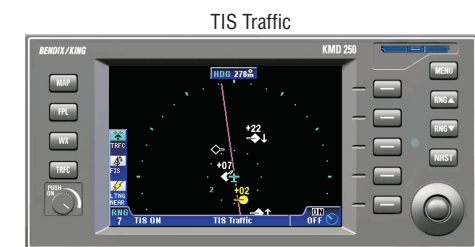
006-18282-0000
Rev. 2 August 2007



TAS Traffic

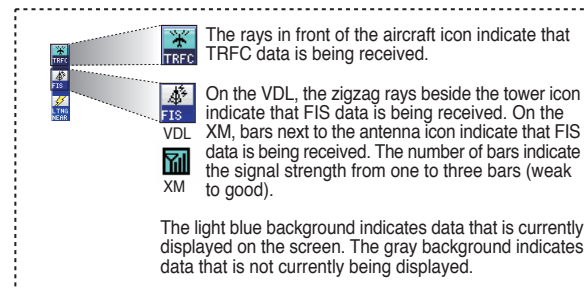
TRFC (Traffic)

The traffic display could be either TAS/TCAS.



TIS Traffic

(or TIS, depending on which system is installed)



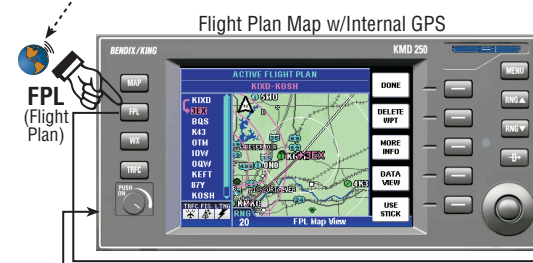
WARNING

The enclosed technical data is eligible for export under License Designation NLR and is to be used solely by the individual/organization to whom it is addressed. Diversion contrary to U.S. law is prohibited.

COPYRIGHT NOTICE

Reproduction of this publication or any portion thereof by any means without the express written permission of Honeywell International Inc. is prohibited. For further information contact the Manager, Technical Publications; Honeywell; One Technology Center; 23500 West 105th Street; Olathe, Kansas 66061. Telephone: (913) 712-0400.

Functions that are related to the use of the optional internal GPS are marked with this symbol.



Flight Plan Map w/Internal GPS

FPL (Flight Plan)

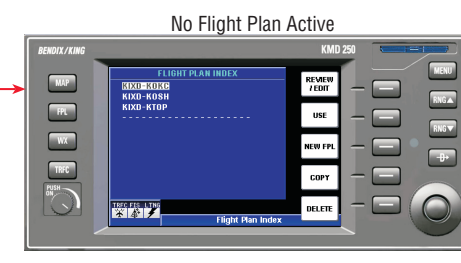


Flight Plan Index w/Internal GPS

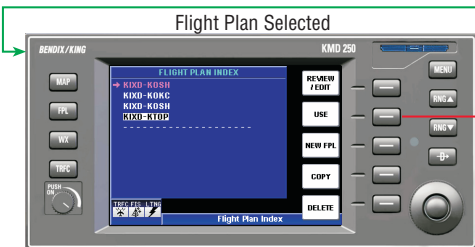
Select Flight Plan to Activate with Joystick



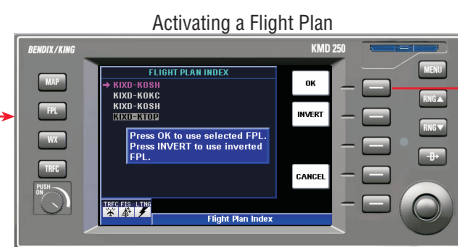
Deleting the Active Flight Plan



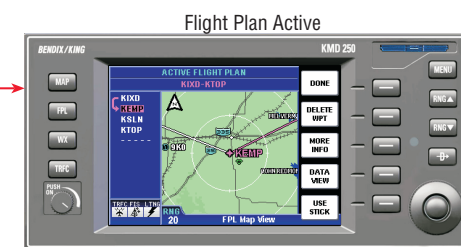
No Flight Plan Active



Flight Plan Selected



Activating a Flight Plan



Flight Plan Active

